

Ocean Container Dimensions

STANDARD 20'



INSIDE LENGTH	19'4"	5.89 m
INSIDE WIDTH	7'8"	2.33 m
INSIDE HEIGHT	7'10"	2.38 m
DOOR WIDTH	7'8"	2.33 m
DOOR HEIGHT	7'6"	2.28 m
CAPACITY	1,172 ft ³	33.18 m ³
TARE WEIGHT	4,916 lb	2,229 kg
MAX. CARGO	47,999 lb	21,727 kg

STANDARD 40'

HIGH CUBE 40'

INSIDE LENGTH	39'5"	12.01 m	39'5"	12.01 m
INSIDE WIDTH	7'8"	2.33 m	7'8"	2.33 m
INSIDE HEIGHT	7'10"	2.38 m	8'10"	2.69 m
DOOR WIDTH	7'8"	2.33 m	7'8"	2.33 m
DOOR HEIGHT	7'6"	2.28 m	8'5"	2.56 m
CAPACITY	2,390 ft ³	67.67 m ³	2,694 ft ³	76.28 m ³
TARE WEIGHT	8,160 lb	3,701 kg	8,750 lb	3,968 kg
MAX. CARGO	59,040 lb	26,780 kg	58,450 lb	26,512 kg

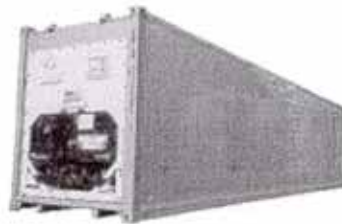


OPEN TOP 20'

(upgraded also available)

OPEN TOP 40'

INSIDE LENGTH	19'4"	5.89 m	39'5"	12.01 m
INSIDE WIDTH	7'7"	2.31 m	7'8"	2.33 m
INSIDE HEIGHT	7'8"	2.33 m	7'8"	2.33 m
DOOR WIDTH	7'6"	2.28 m	7'8"	2.33 m
DOOR HEIGHT	7'2"	2.18 m	7'5"	2.26 m
CAPACITY	1,136 ft ³	32.16 m ³	2,350 ft ³	66.54 m ³
TARE WEIGHT	5,280 lb	2,394 kg	8,490 lb	3,850 kg
MAX. CARGO	47,620 lb	21,600 kg	58,710 lb	26,630 kg



REEFER 20'

REEFER 40'

INSIDE LENGTH	17'8"	5.38 m	37'8"	11.48 m
INSIDE WIDTH	7'5"	2.26 m	7'5"	2.26 m
INSIDE HEIGHT	7'5"	2.26 m	7'2"	2.18 m
DOOR WIDTH	7'5"	2.26 m	7'5"	2.26 m
DOOR HEIGHT	7'3"	2.20 m	7'0"	2.13 m

CAPACITY	1,000 ft ³	28.31 m ³	2,040 ft ³	57.76 m ³
TARE WEIGHT	7,040 lb	3,193 kg	10,780 lb	4,889 kg
MAX. CARGO	45,760 lb	20,756 kg	56,276 lb	25,526 kg



FLAT RACK 20'

FLAT RACK 40'

INSIDE LENGTH	18'5"	5.61 m	39'7"	12.06 m
INSIDE WIDTH	7'3"	2.20 m	6'10"	2.08 m
INSIDE HEIGHT	7'4"	2.23 m	6'5"	1.95 m
TARE WEIGHT	5,578 lb	2,530 kg	12,081 lb	5,479 kg
MAX. CARGO	47,333 lb	21,469 kg	85,800 lb	38,918 kg



**FLAT RACK
COLLAPSIBLE 20'**

**FLAT RACK
COLLAPSIBLE 40'**

INSIDE LENGTH	18'6"	5.63 m	39'7"	12.06 m
INSIDE WIDTH	7'3"	2.20 m	6'10"	2.08 m
INSIDE HEIGHT	7'4"	2.23 m	6'5"	1.95 m
TARE WEIGHT	6,061 lb	2,749 kg	12,787 lb	5,800 kg
MAX. CARGO	61,117 lb	27,722 kg	85,800 lb	38,918 kg



PLATFORM 20'

PLATFORM 40'

INSIDE LENGTH	19'11"	6.07 m	40'0"	12.19 m
INSIDE WIDTH	8'0"	2.43 m	8'0"	2.43 m
INSIDE HEIGHT	7'4"	2.23 m	6'5"	1.95 m
TARE WEIGHT	6,061 lb	2,749 kg	12,783 lb	5,798 kg
MAX. CARGO	52,896 lb	23,993 kg	66,397 lb	30,117 kg

EQUIPMENT – TRUCK, TRUCK TRAILERS & VAN SPECIFICATIONS:

Please Note: All truck & trailer specifications and dimensions are “approximate” and are to be used only as a guide. Axle configurations and manufacturers’ specifications may vary.

53' Air Ride Dry Vans	
Length:	52 feet 6 inches
Width:	102 inches
Height:	102 inches
Hi-Cube Van Height:	110 inches
Tare Weight:	15,000 pounds
GVW:	44,000 pounds
Capacity:	3800 cubic feet
Suspension:	Air-Ride
Options: Roll or swing doors, load bars, straps	

53' Air Ride Refrigerated Vans	
Length:	52 feet 6 inches
Width:	97 inches
Height:	99 inches
Hi-Cube Van Height:	110 inches
Tare Weight:	15,500 pounds
GVW:	45,000 pounds
Capacity:	3500 cubic feet
Suspension:	Air-Ride

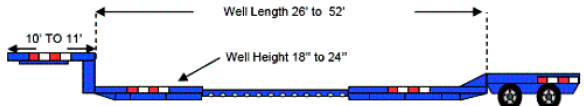
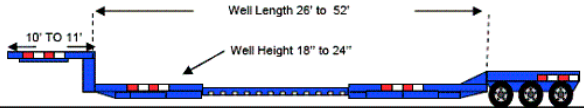
24' Straight Trucks	
Length:	24 feet
Width:	98 inches
Height:	102 inches
Hi-Cube Height:	110 inches
Tare Weight:	10,000 pounds
GVW :	26,000 pounds
Capacity:	1550 cubic feet
Options: Power Tailgate, Refrigeration	

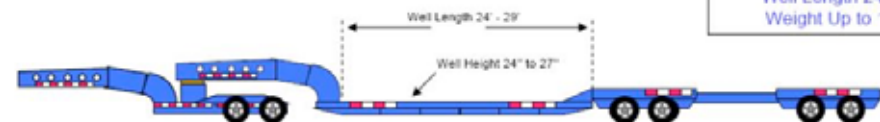
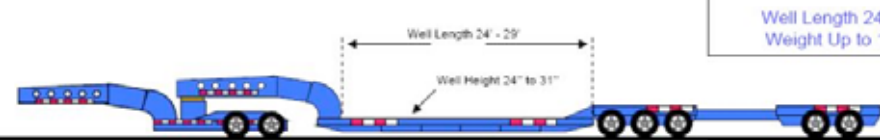
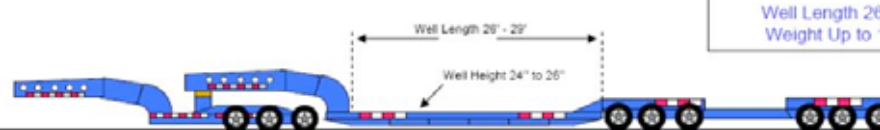
Flatbeds & Stepdecks	
Length:	48 - 53 feet
Width:	96 inches
Flatbed Deck Heights:	54 - 60 inches
Stepdeck Deck Heights:	42 - 48 inches
Single Drop Stepdeck	
Well Lengths:	28 - 40 feet
Double Drop Stepdeck	
Well Lengths:	18 - 30 feet
Options: Air Ride Suspension, Rack & Tarp, Curtain Side, Tarps.	
The overall legal height of the trailer plus load is 13'6" in most states and provinces. Loads higher require permits and in most cases flagmen.	

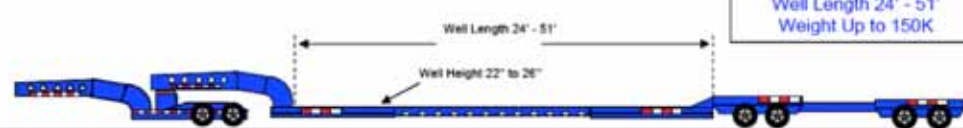

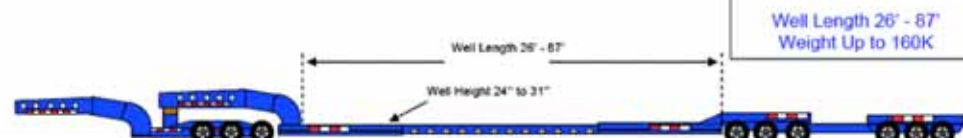
Equipment Type	Average Legal Acceptable Weights	Average Legal Acceptable Dims
FLATBED 	45K – 48K	Length: 45' – 53' Width: 8' 6" Height: up to 8' 6"
3 AXLE FLATBED (FLT3) 	43K – 45K	Length: 45' – 53' Width: 8' 6" Height: up to 8' 6"
EXTENDABLE FLATBED (FLTE) 	40K – 42K	Length: 45' – 115' Width: 8' 6" Height: up to 8' 6"
3 AXLE EXTENDABLE FLATBED (FL3E) 	38K – 40K	Length: 45' – 94' Width: 8' 6" Height: up to 8' 6"

STEPDECK (DROPDECK) 	43K – 46K	<u>Bottom Deck</u> Length: 37' – 43' Width: 8' 6" Height: up to 10' 6"
3 AXLE STEPDECK (SD3) 	40K – 43K	<u>Bottom Deck</u> Length: 37' – 43' Width: 8' 6" Height: up to 10' 6"
EXTENDABLE STEPDECK (SDE) 	42K – 44K	<u>Bottom Deck</u> Length: 38' – 61' Width: 8' 6" Height: up to 10' 6"
3 AXLE EXTENDABLE STEPDECK (SD3E) 	38K – 41K	<u>Bottom Deck</u> Length: 38' – 68' Width: 8' 6" Height: up to 10' 6"

DOUBLE DROP/ DETACH (DD) 	38K – 42K	<u>Well Length</u> Length: 24' – 29' 6" Width: 8' 6" Height: up to 12'
DOUBLE DROP/ DETACH (DD3) 	37K – 40K	<u>Well Length</u> Length: 24' – 29' 6" Width: 8' 6" Height: up to 12'
LOWBOY/ R.G.N. (LOWB) 	38K – 42K	<u>Well Length</u> Length: 24' – 29' 6" Width: 8' 6" Height: up to 12'
3 AXLE LOWBOY/ R.G.N. (LOW3) 	37K – 40K	<u>Well Length</u> Length: 24' – 29' 6" Width: 8' 6" Height: up to 12'

<p>EXTENDABLE DOUBLE DROP/ DETACH (DDE)</p> 	<p>37K – 40K</p>	<p><u>Well Length</u> Length: 26' – 52' Width: 8' 6" Height: up to 12'</p>
<p>3 AXLE EXTENDABLE DOUBLE DROP/ DETACH (DD3E)</p> 	<p>34K – 37K</p>	<p><u>Well Length</u> Length: 26' – 52' Width: 8' 6" Height: up to 12'</p>

<p>MULTI-AXLE LOWBOY COMBINATION (LOW6)</p> 	<p><u>Capacity</u> Well Length 24' - 29' Weight Up to 150K</p>
<p>MULTI-AXLE LOWBOY COMBINATION (LOW7)</p> 	<p><u>Capacity</u> Well Length 24' - 29' Weight Up to 150K</p>
<p>MULTI-AXLE LOWBOY COMBINATION (LOW9)</p> 	<p><u>Capacity</u> Well Length 26' - 29' Weight Up to 160K</p>

<p>MULTI-AXLE LOWBOY COMBINATION (LOWE)</p> 	<p><u>Capacity</u> Well Length 24' - 51' Weight Up to 150K</p>
<p>MULTI-AXLE LOWBOY COMBINATION (LOWE)</p> 	<p><u>Capacity</u> Well Length 26' - 55' Weight Up to 150K</p>
<p>MULTI-AXLE LOWBOY COMBINATION (LOWE)</p> 	<p><u>Capacity</u> Well Length 26' - 67' Weight Up to 160K</p>